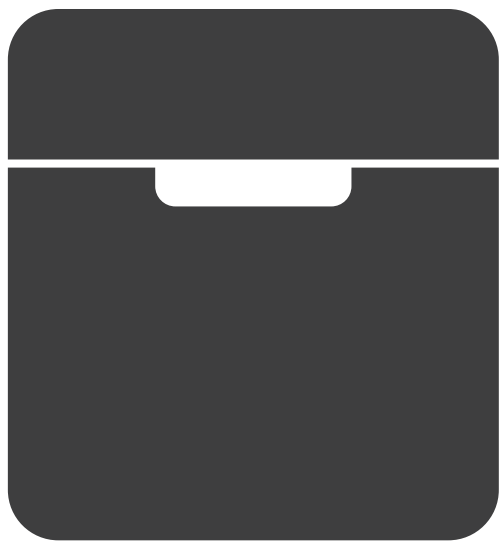


loofen

Waste Reducer



SLW-03

Copyright

This USER MANUAL shall not be copied or reproduced without prior approval. LOOFEN CO., LTD. shall have all the patent rights, trademark rights, copyrights and other intellectual property rights related to this USER MANUAL.

Exemption Clause

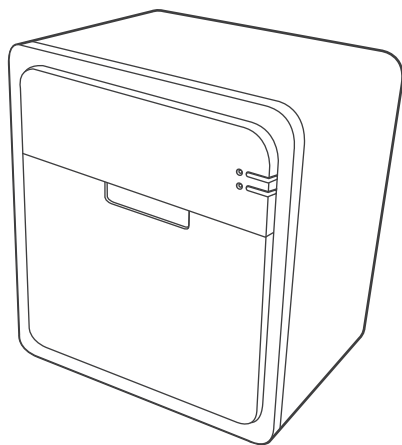
This USER MANUAL is mainly focused on the product specifications. The actual product specifications may differ from the specifications specified in this USER MANUAL. The manufacturer and store shall not be held responsible for any damages occurring due to inadequate use and operation.

This product cannot be used in the countries where different power supplies and voltages are used.

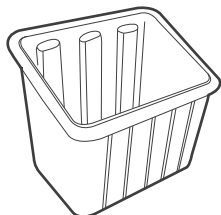
Contents

2. Components
3. How to Install
4. How to Use
5. Cautions
9. Matters to Be Checked Prior to Submitting a Service Request
10. Product Specifications
11. Warranty

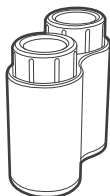
Components



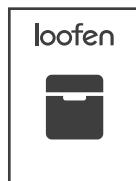
Main Body



Basket

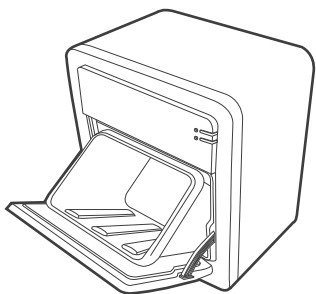


Deodorization
Filter

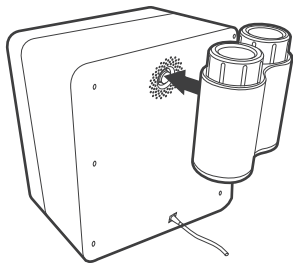


User Manual

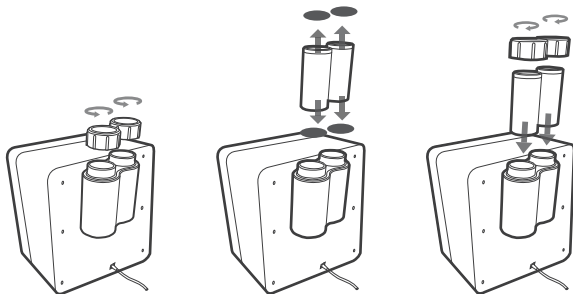
How to Install



1. Remove the plastic packaging and insert the basket.



2. Attach the deodorization filter to the rear side of the product.



3. Rotate and open the top of the deodorization filter case. Remove the stickers(2 on the top and 2 on the bottom) attached to the deodorization filter. Put the filter back into the case and close the top.

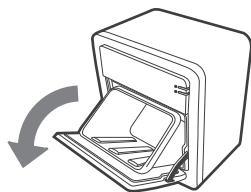
Filter Replacement

* Make sure to replace the filter once per 3~6 months when it gives out a bad odor.

The replacement period may vary depending on the use period and the processing capacity.

How to Use

1. Drain the residual waste sufficiently.



2. Open the inlet and put the residual waste into the basket.



The maximum daily processing capacity is 1kg. Make sure not to exceed the maximum daily processing capacity or put an excessive amount at once. Doing so may decrease the drying efficiency, create a bad odor and decrease the filter lifespan.

In the case where any food waste with a bad odor exceeding the processing capacity of the filter is processed, it is possible that a bit of odor may be created. Rinsing such food waste once with water and draining it prior to its processing contribute to extending the filter lifespan.

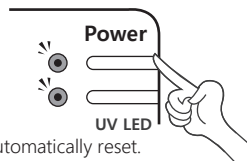
3. Insert the food waste and press the power button to automatically activate the product.



Once the drying mode is activated, after 19 hours the product will automatically change to the air blow mode.

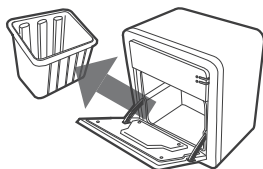
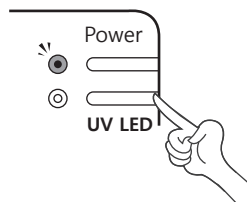
Once the door opens and closes, the operating time will be automatically reset.

* If you turn off the product during working, it will operate air blow mode for 1 minute before turning off the power completely.



The UV LED sterilization will be automatically activated once the power button is pressed to start the drying mode. UV LED will turn off automatically after 5 hours.

4. While the product is in operation, the UV LED button can be pressed to activate or deactivate the UV LED sterilization. UV LED will turn off automatically after 5 hours.



4. Once the drying is complete, empty the basket.

Cautions

1. It is important for the users to read the following information to prevent negligent accidents and property losses.
2. Make sure to read and become aware of the following information prior to using the product.
3. The cautions are divided into '**DANGER**', '**WARNING**', and '**CAUTION**'.



DANGER: In the case where the instructions are not followed, the users may experience serious injuries or property losses.



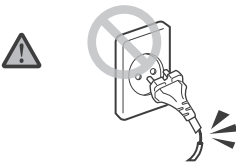
WARNING: In the case where the instructions are not followed, the users may experience injuries or property losses.



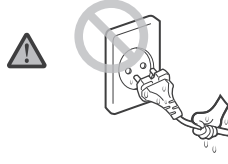
CAUTION: In the case where the instructions are not followed, the users may experience injuries or cause product damages.

- * This device is not designed to be used by any persons (including children) incapable of safely using the device without supervision or instruction due to either lack of physical/sensory/mental ability or lack of experience/knowledge.

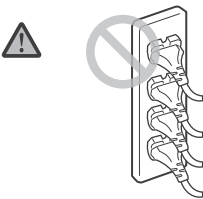
Power Management



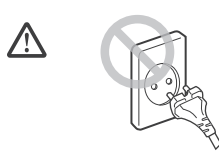
In the case where the cord is damaged, make a request for A/S.



Do not intensely pull the cord or touch the power plug with wet hands.



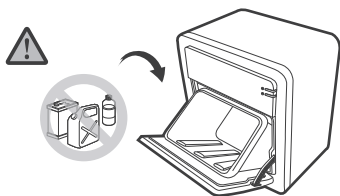
Do not insert a number of power plugs into one socket at the same time.



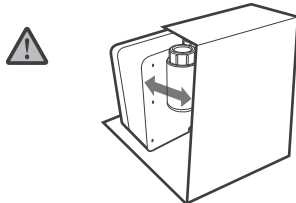
Make sure to check the power voltage prior to use.

Cautions

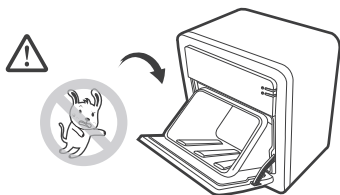
Use-related Cautions



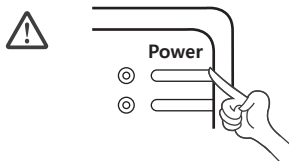
Do not insert any flammable substances. Doing so may cause fire and explosions



In the case where the product is used in a free-standing method, do not use the product in an enclosed space. Doing so may decrease the device lifespan.



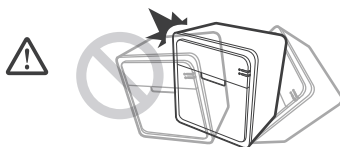
Do not lock up or insert any animal into the inlet.



In the case where the product functions abnormally, shut down the power and immediately contact the customer care center.



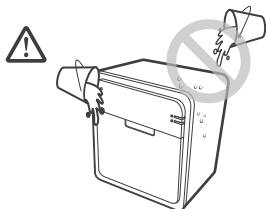
Do not put any whole fruit into the basket. Make sure to cut any food waste with a massive volume prior to inserting it into the basket. Not doing so may have an influence on the drying efficiency.



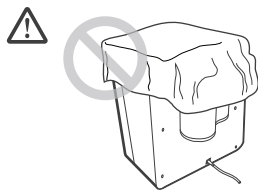
Be noted that intensely opening and closing the door may cause the product to fall.

Cautions

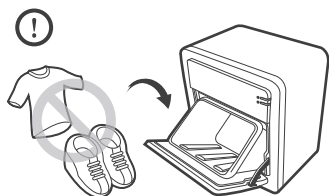
Use-related Cautions



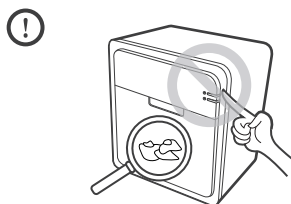
Make sure that water goes in through the inlet only. Not doing so may damage the product.



Do not place any obstacles on top of the deodorization system. Doing so may cause electric shock and fire.



Do not use this product for any use other than food waste processing. Doing so may damage the product.



Do not shut down the power while any food waste is inside the product or store any food waste inside the product for too long. Doing so may create a bad odor and spoil the inserted food waste.



Do not exceed the maximum daily processing capacity or insert an excessive amount at once. Doing so may decrease the drying efficiency, create a bad odor and decrease the filter lifespan.



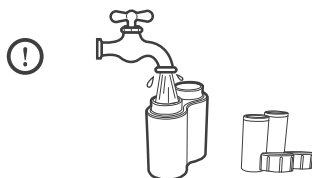
Make sure that children and elderly are well aware of how to use the product. In particular, make sure that children do not play with the device.

Cautions

Cleaning-related Cautions



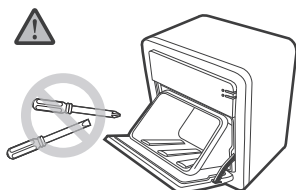
Disconnect the power plug prior to cleaning the product. Do not apply water directly to the product or use any highly flammable substance to rub the product. Doing so may cause electric shock or fire.



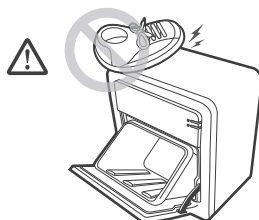
Since the filter case may be filled with water or create a bad odor, make sure to clean it periodically.

*** Not filter, Filter case only**

Other Cautions



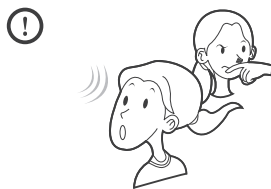
Do not disassemble, repair or remodel the product at your own discretion.



Do not hand onto the open door or step on the product.



Do not place any substances, water-filled bowls, drugs and metals on top of the product.



In the case where any abnormal noise, odor and smoke are detected, disconnect the power plug, close the door and contact the customer care center.

Check List before Submitting a Service Request

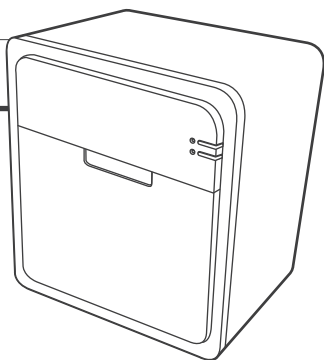
In the case where the product is abnormal, make sure to check the following matters prior to submitting a service request.

If this occurs	Check	And Do as Follows
Even when the start button is pressed, the product does not become activated	<ul style="list-style-type: none">• Isn't the power plug disconnected from the socket?• Is the inlet completely closed?	<ul style="list-style-type: none">• Make sure to insert the power plug into a socket.• Make sure to completely close the inlet.
The processing time takes too long.	<ul style="list-style-type: none">• Isn't the product filled with an excessive amount of waste?• Isn't the product filled with an excessive amount of waste?	<ul style="list-style-type: none">• It may take longer to dry any food waste with an excessive amount of moisture. Let the process take its time.• Do not overfill the basket with any food waste.
The drying is not complete.	<ul style="list-style-type: none">• Isn't the product placed inside a plastic or covered with a pocket or cover?• Isn't the product filled with any food waste with an excessive amount of moisture?	<ul style="list-style-type: none">• Remove the plastic, pocket and cover, and push the start button once more.• Press the start button once more to start the processing.
The product creates a bad odor while processing the food waste.	<ul style="list-style-type: none">• Is the main body door properly closed?• Isn't the door packing damaged?• Isn't the deodorization filter's replacement period expired?	<ul style="list-style-type: none">• Make sure to completely close the main body door.• Contact either the store you purchased your product from or our customer care center.• Replace the deodorization filter.
The product creates abnormal noises.	<ul style="list-style-type: none">• Aren't any foreign substances such as plastic blocking the motor cover?	<ul style="list-style-type: none">• Remove the foreign substances.

In the case where you find any other troubles, contact either the store you purchased your product from or our customer care center.

Product Specifications

Processing Method	Air Circulation Method
Odor Processing Method	Free-Standing (Deodorization Filter)
Power Supply	Custom Order
Power Consumption	Air Blowing Mode: 10 W Standard Mode: 130 W
Sterilization	UV LED
Processing Capacity	7 L
Product Weight	8 kg
Dimension	360 mm(W) x 250 mm(D) x 438 mm(H)
Manufacturer	LOOFEN CO., LTD.
Country of Manufacture	Republic of Korea



Warranty

Seller's Company Name & Contact No.	(Tel. _____)
Date of Purchase (To Be Filled Out by Seller)	Year _____ Month _____ Day _____

Have the seller fill out the date of purchase, and make sure to keep this WARRANTY throughout your use of this product.
(You may suffer a disadvantage unless the date of purchase is not filled out by the seller.)

1. This product was manufactured based on a strict quality-control and inspection process.
2. This product-related warranty benefits can be received based on the information specified in this WARRANTY.
3. Since the free warranty period is based on the date of purchase, make sure to fill out the date of purchase.
4. This WARRANTY shall remain in effect only in Korea.
5. This WARRANTY cannot be re-issued. Make sure not to lose it.

Related Item's Warranty Period & Part Holding Period

Item	Warranty Period
Waste Reducer	1 Year

loofen

www.loofen.com